

80D-9

With Stage IV Engine installed

MOVING YOU FURTHER

HYUNDAI HEAVY INDUSTRIES



■ Photo may include optional equipment

 **HYUNDAI**
HEAVY INDUSTRIES

Your Satisfaction is Our Priority!

Hyundai introduces a new line of 9-series 8 ton diesel forklift trucks. The newly designed 4 wheel counterbalance trucks provide every operator comfortable driving, increased productivity and easy maintenance.

New Diesel Forklift with Proven Quality and Advanced Technology

- Maximum performance
- Spacious operator's cab
- Load indicator
- OPSS(Operator Presence Sensing System) for safe operation
- Easy serviceability
- Hi-mate (Remote Management System)



■ Photo may include optional equipment

High Efficiency & Optimal Performance

Powerful engine and high technology systems provide you with enhanced performance and highest productivity.

80D-9



■ Photo may include optional equipment



Cummins QSF3.8 Engine

75 kW / 2,200 rpm

42.3 kgf.m / 1,600 rpm

Powerful Engine

The 4 cylinders turbo-charged engine is built for power, reliability and economy. This engine meets EPA, CARB Tier-4 Final and EU stage IV emission regulation.

High Pressure Common Rail Fuel System(HPCR)

Upgraded HPCR System provides excellent start

Ability & Emission Control

- Combustion efficiency enhancement
- Low noise, Low vibration

Selective Catalytic Reduction(SCR)

- Reduces NOx emissions to near-zero level
- NO DPF



Full-Automatic Transmission

Full-automatic transmission gives easy, convenient handling and soft, smooth shifting. The operator can select two kinds of automatic mode.



Fully Hydrostatic Power Steering

The hydraulic steering system always guarantees smooth and flexible steering, preventing over-run and kick-back.



Highly Durable Split Type Drive Axle

The durable drive axle provides fast travel speed and quiet travel under any heavy load condition, and boosts work efficiency.



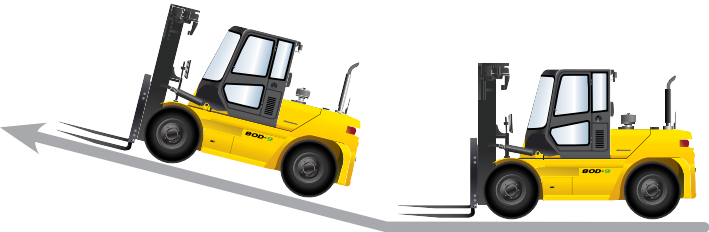
Wet Disc Brake System

The wet disc brake system is virtually maintenance free and is enclosed to protect from dust and water.



Increased Mast Tilting Angle

Utilizing the mast tilting angle of 15 degrees forward and 10 degrees backward, the operator can perform loading and unloading jobs safely and rapidly. (Optional angles are available; 15/6degree & 6/6degree)



| Max.Gradeability (loaded/Unloaded) | | Max.Travel Speed (Unloaded) | |
|------------------------------------|-------------|-----------------------------|--------|
| Model | % | Model | Km / h |
| 80D-9 | 35.2 / 26.5 | 80D-9 | 35 |

Faster Travel Speed & Better Gradability

The powerful engine provides greater acceleration, better gradability and faster travel speed on any tough terrains or slopes.

Best Convenience& Optimised Ergonomics

The ergonomically designed cabin provides full support and comfort to the operator.

80D-9



Spacious Operator Cabin

The newly designed cabin was conceived for more space, a wider field of view and operator comfort.

■ Photo may include optional equipment



Centralized Instrument Switch Panel



MP3 CD Player



Grammer Seat (STD)

An attractive and adjustable seat, based on a human engineering design, provides great comfort. And the angle of the armrest can be adjusted to reduce the fatigue of the driver.

- Applied the weight of the driver(45~170kg)
- ELR type seat belt standard
- Heater and Head Rest (Option)



Quick Response of Operating Control Levers

Only minimal operator's effort is required for precise, safe and productive control.



Ergonomically Positioned Pedals

Based on human engineering the accelerator, brake and inching pedals are optimally positioned for the operator's convenience.



Adjustable Steering Wheel

Steering wheel with horn button can be adjusted by a lever on the right-hand side for the most comfortable operator position.



High-Output Air Conditioner & Heater

An air conditioner with integrated the condenser is mounted on upper side of the cabin to make a wide room in the cabin. And an air conditioner with high-output and heater always provide you with comfortable environment when you work.

Advanced Safety

The safely designed driver's space makes your operating more comfortable.

80D-9



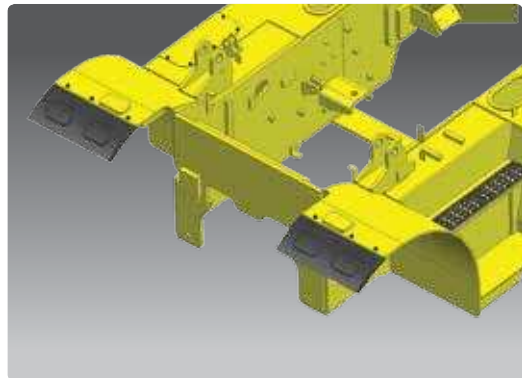
Direct Flow Air Cleaner
Cummins air cleaner introduced to enhance the performance of Tier-4 engines. More compact and efficient than previous cylindrical style air cleaners. Simple filter element change with capability to extend intervals



Electrically Monitored Air Filter
Air cleaner sensor alerts the operator of a clogged air filter and allows replacement before damage.



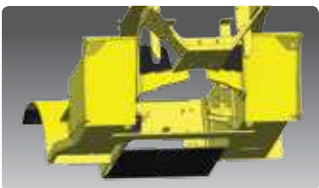
Exterior
A strong overhead guard, which meets ISO 6055 regulation, protects the operator in hazardous jobs.



Front Mudguard STD.
Front mud guard protect the equipment from foreign substances caused by the front tires. It helps to use the equipment clearly.



Cabin Tilting Automatic System
Cabin tilting automatic system makes servicing of all power train components quick and easy. An electrically assisted hydraulic actuated cylinder tilts operator cabin to right side about 42.5 degrees for easy access to inside of truck components.



Under Cover (Option)
The Under cover protect the engine and components from dusts caused by ground. It helps to lengthen components life.

OPSS (Operator Presence Sensing System)
When the operator is not in the seat all mast and drive movements are impossible. (option)



■ Photo may include optional equipment



Highly Durable Carriage
The carriage is very strong cause of applying the high tensile structural steel which has a excellent durability.



Large Footboard & Handle
Wide "open" step offers convenience and safety when entering and exiting the truck.



Excellent Lights
- Various position of work lamp provides the operator more comfortable and safe operating environments.
- On Cabin:
2 Front head lamps
1 Rear work lamp
1 beacon lamp (optional)
- LED Rear Combination lamps



Bright, Protected Head Lights

Fast and Easy Maintenance

An ideal arrangement of components ensures easy access and convenience for maintenance.

80D-9

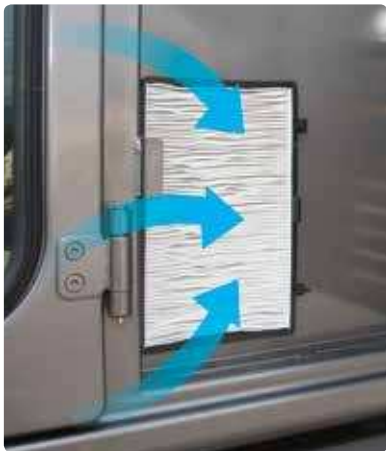


Tilting Cabin & Large Engine Hood
Highly accessible engine compartment assures fast and efficient maintenance.

■ Photo may include optional equipment



Easy Change Air Cleaner
This air filter is readily accessible for cleaning or replacement.



Cabin Air Fresh Filter
The internal pressure is maintained to be slightly higher than that of outside to exclude dust and to reduce noise levels.



Grease Inlet



Maintenance Free Battery



Pre-Cleaner



Fuel Cap



Rear View Camera (Option)
The rear view camera makes the operation more easy and convenient. And the monitor supports 4 camera channels.



Some of the photos may include optional equipment.



Master Switch
A master switch disconnects the battery power to protect the electrical system from excess electrical drainage. (optional)



Maintenance Management Display



Engine Start Limit

Mast Specification (Hook/Shaft Type)

Standard : Hook-On Type Fork & Carriage

| Model | Mast Type | | Maximum Fork height | | Overall Height | | | | | | Free Lift | | | | Tilt Angle TRUCK | | Load capacity w/o side shift At 24 in (600mm)LC | | Load capacity w/integral side shift At 24 in (600mm)LC | | TRUCK WEIGHT UNLOADED | |
|-------|---------------------------|-----------|---------------------|------|----------------|------|-------------------|------|---------------------|------|-----------------------|------|------------------------|------|------------------|-----|--|------|---|------|-----------------------|-------|
| | | | | | Low ered | | Extended | | | | Without Load Backrest | | With Std Load Backrest | | | | | | | | | |
| | | | | | | | W/o Load Backrest | | W/Std Load Backrest | | | | | | Fwd | Bwd | | | | | | |
| | | | in | mm | in | mm | in | mm | in | mm | in | mm | deg | deg | lb | kg | lb | kg | lb | kg | | |
| 80D-9 | 2-STAGE LIMITED FREE LIFT | V270 | 107.9 | 2740 | 99.4 | 2525 | 159.4 | 4048 | 159.4 | 4050 | 5.9 | 150 | 5.9 | 150 | 15 | 10 | 17500 | 8000 | 17500 | 8000 | 25487 | 11559 |
| | | V300 | 119.7 | 3040 | 105.3 | 2675 | 171.2 | 4348 | 171.3 | 4350 | 5.9 | 150 | 5.9 | 150 | 15 | 10 | 17500 | 8000 | 17500 | 8000 | 25595 | 11608 |
| | | V330 | 131.5 | 3340 | 111.2 | 2825 | 183.0 | 4648 | 183.1 | 4650 | 5.9 | 150 | 5.9 | 150 | 15 | 10 | 17500 | 8000 | 17500 | 8000 | 25703 | 11657 |
| | | V350 | 139.4 | 3540 | 115.2 | 2925 | 190.9 | 4848 | 190.9 | 4850 | 5.9 | 150 | 5.9 | 150 | 15 | 10 | 17500 | 8000 | 17500 | 8000 | 25776 | 11690 |
| | | V370 | 147.2 | 3740 | 119.1 | 3025 | 198.7 | 5048 | 198.8 | 5050 | 5.9 | 150 | 5.9 | 150 | 15 | 10 | 17500 | 8000 | 17500 | 8000 | 25847 | 11722 |
| | | V400 | 159.1 | 4040 | 125.0 | 3175 | 210.6 | 5348 | 210.6 | 5350 | 5.9 | 150 | 5.9 | 150 | 15 | 10 | 17500 | 8000 | 17500 | 8000 | 25955 | 11771 |
| | | V450 | 178.7 | 4540 | 136.8 | 3475 | 230.2 | 5848 | 230.3 | 5850 | 5.9 | 150 | 5.9 | 150 | 15 | 10 | 17500 | 8000 | 17500 | 8000 | 26429 | 11986 |
| | | V500 | 198.4 | 5040 | 146.7 | 3725 | 249.9 | 6348 | 250.0 | 6350 | 5.9 | 150 | 5.9 | 150 | 15 | 10 | 17500 | 8000 | 17500 | 8000 | 26609 | 12067 |
| | | V550 | 218.1 | 5540 | 156.5 | 3975 | 269.6 | 6848 | 269.7 | 6850 | 5.9 | 150 | 5.9 | 150 | 15 | 10 | 17500 | 8000 | 16979 | 7700 | 26788 | 12149 |
| | | V600 | 237.8 | 6040 | 166.3 | 4225 | 289.3 | 7348 | 289.4 | 7350 | 5.9 | 150 | 5.9 | 150 | 15 | 10 | 17420 | 7900 | 16538 | 7500 | 26969 | 12231 |
| | | V700 | 277.2 | 7040 | 186.0 | 4725 | 328.7 | 8348 | 328.7 | 8350 | 5.9 | 150 | 5.9 | 150 | 15 | 6 | 16538 | 7500 | 15656 | 7100 | 27421 | 12436 |
| | | V750 | 296.9 | 7540 | 195.9 | 4975 | 348.3 | 8848 | 348.4 | 8850 | 5.9 | 150 | 5.9 | 150 | 15 | 6 | 16097 | 7300 | 15215 | 6900 | 27606 | 12520 |
| | 3-STAGE FULL FREE LIFT | TF/TS 450 | 179.9 | 4570 | 108.3 | 2750 | 232.4 | 5902 | 231.5 | 5880 | 55.8 | 1418 | 56.7 | 1440 | 15 | 10 | 17500 | 8000 | 17500 | 8000 | 27055 | 12270 |
| | | TF/TS 500 | 199.6 | 5070 | 116.1 | 2950 | 252.0 | 6402 | 251.2 | 6380 | 63.7 | 1618 | 64.6 | 1640 | 15 | 10 | 17500 | 8000 | 17200 | 7800 | 27282 | 12373 |
| | | TF/TS 550 | 223.2 | 5670 | 124.0 | 3150 | 271.7 | 6902 | 270.9 | 6880 | 71.6 | 1818 | 72.4 | 1840 | 15 | 10 | 17500 | 8000 | 16759 | 7600 | 27507 | 12475 |
| | | TF/TS 600 | 239.0 | 6070 | 131.9 | 3350 | 291.4 | 7402 | 290.6 | 7380 | 79.4 | 2018 | 80.3 | 2040 | 15 | 10 | 17200 | 7800 | 16318 | 7400 | 27734 | 12578 |

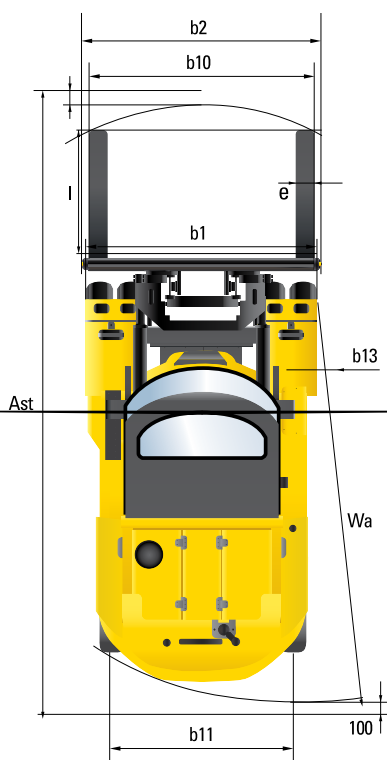
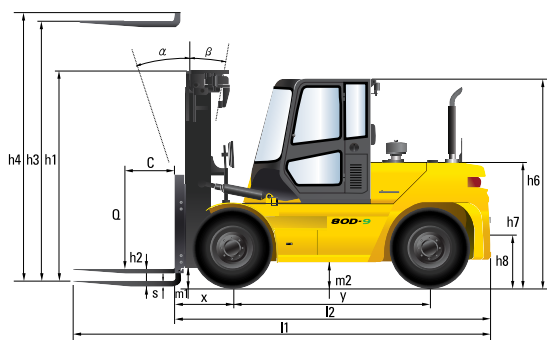
Option : Shaft Type Fork & Carriage

| Model | Mast Type | | Maximum Fork height | | Overall Height | | | | Free Lift | | Tilt Angle | | Load capacity w/o side shift At 24 in (600mm)LC | | Load capacity w /integral side shift At 24 in (600mm)LC | | TRUCK WEIGHT UNLOADED | |
|-------|---------------------------|-----------|---------------------|------|----------------|------|----------|------|-----------|------|------------|-----|--|------|--|------|-----------------------|-------|
| | | | | | Low ered | | Extended | | | | Fwd | Bwd | | | | | | |
| | | | | | | | | | | | | | in | mm | in | mm | in | mm |
| 80D-9 | 2-STAGE LIMITED FREE LIFT | V270 | 107.9 | 2740 | 99.4 | 2525 | 160.4 | 4075 | 5.9 | 150 | 15 | 10 | 17500 | 8000 | 17500 | 8000 | 25461 | 11547 |
| | | V300 | 119.7 | 3040 | 105.3 | 2675 | 172.2 | 4375 | 5.9 | 150 | 15 | 10 | 17500 | 8000 | 17500 | 8000 | 25569 | 11596 |
| | | V330 | 131.5 | 3340 | 111.2 | 2825 | 184.1 | 4675 | 5.9 | 150 | 15 | 10 | 17500 | 8000 | 17500 | 8000 | 25677 | 11645 |
| | | V350 | 139.4 | 3540 | 115.2 | 2925 | 191.9 | 4875 | 5.9 | 150 | 15 | 10 | 17500 | 8000 | 17500 | 8000 | 25750 | 11678 |
| | | V370 | 147.2 | 3740 | 119.1 | 3025 | 199.8 | 5075 | 5.9 | 150 | 15 | 10 | 17500 | 8000 | 17500 | 8000 | 25820 | 11710 |
| | | V400 | 159.1 | 4040 | 125.0 | 3175 | 211.6 | 5375 | 5.9 | 150 | 15 | 10 | 17500 | 8000 | 17500 | 8000 | 25928 | 11759 |
| | | V450 | 178.7 | 4540 | 136.8 | 3475 | 231.3 | 5875 | 5.9 | 150 | 15 | 10 | 17500 | 8000 | 17500 | 8000 | 26402 | 11974 |
| | | V500 | 198.4 | 5040 | 146.7 | 3725 | 251.0 | 6375 | 5.9 | 150 | 15 | 10 | 17500 | 8000 | 17420 | 7900 | 26582 | 12055 |
| | | V550 | 218.1 | 5540 | 156.5 | 3975 | 270.7 | 6875 | 5.9 | 150 | 15 | 10 | 17500 | 8000 | 16979 | 7700 | 26762 | 12137 |
| | | V600 | 237.8 | 6040 | 166.3 | 4225 | 290.4 | 7375 | 5.9 | 150 | 15 | 10 | 17420 | 7900 | 16318 | 7400 | 26943 | 12219 |
| | | V700 | 277.2 | 7040 | 186.0 | 4725 | 329.7 | 8375 | 5.9 | 150 | 15 | 6 | 16538 | 7500 | 15436 | 7000 | 27395 | 12424 |
| | | V750 | 296.9 | 7540 | 195.9 | 4975 | 349.4 | 8875 | 5.9 | 150 | 15 | 6 | 16097 | 7300 | 14994 | 6800 | 27580 | 12508 |
| | 3-STAGE FULL FREE LIFT | TF/TS 450 | 179.9 | 4570 | 108.3 | 2750 | 232.5 | 5905 | 55.7 | 1415 | 15 | 10 | 17500 | 8000 | 17500 | 8000 | 26998 | 12244 |
| | | TF/TS 500 | 199.6 | 5070 | 116.1 | 2950 | 252.2 | 6405 | 63.6 | 1615 | 15 | 10 | 17500 | 8000 | 17200 | 7800 | 27225 | 12347 |
| | | TF/TS 550 | 223.2 | 5670 | 124.0 | 3150 | 271.9 | 6905 | 71.5 | 1815 | 15 | 10 | 17500 | 8000 | 16759 | 7600 | 27450 | 12449 |
| | | TF/TS 600 | 239.0 | 6070 | 131.9 | 3350 | 291.5 | 7405 | 79.3 | 2015 | 15 | 10 | 17200 | 7800 | 16318 | 7400 | 27677 | 12552 |

Load Capacity



Dimension



Specification

| Identification | | 80D-9 |
|------------------|---|---------------------------------|
| 1.1 | Manufacturer | Hyundai |
| 1.2 | Manufacturer's model designation | 80D-9 |
| 1.3 | Drive:electric (battery or mains), diesel, petrol, fuel gas, manual | DIESEL |
| 1.4 | Type of operation:hand, pedestrian, standing, seated, order-picker | seated |
| 1.5 | Load capacity / rated load | kg 8,000 |
| 1.7 | Load center distance | c mm 600 |
| 1.8 | Load distance, center of drive axle to fork | x mm 690 |
| 1.9 | Wheelbase | y mm 2,500 |
| Weights | | |
| 2.1 | Service weight | kg 11,608 |
| 2.2 | Axle loading, loaded front/rear | kg 17,258 / 2,442 |
| 2.3 | Axle loading, unloaded front/rear | kg 5,130 / 6,570 |
| Wheels, Chassis | | |
| 3.1 | Tires:solid rubber, superelastic, pneumatic, polyurethane | pneumatic |
| 3.2 | Tires size, front | 9.00-20-14PR |
| 3.3 | Tires size, rear | 9.00-20-14PR |
| 3.5 | Number of wheels front / rear (x=driven) | 4 x / 2 |
| 3.6 | Track width, front | b10 mm 1,632 |
| 3.7 | Track width, rear | b11 mm 1,700 |
| Basic Dimensions | | |
| 4.1 | Mast / fork carriage tilt forward / backward | α/β degree 15° / 10° |
| 4.2 | Lowered mast height | h1 mm 2,675 |
| 4.3 | Free lift | h2 mm 145 |
| 4.4 | Lift height | h3 mm 3,040 |
| 4.5 | Extended mast height | h4 mm 4,375 |
| 4.7 | Overhead guard height | h6 mm 2,640 |
| 4.8 | Seat height / standing height rel. to SIP | h7 mm 1,650 |
| 4.12 | Coupling height | h10 mm 508 |
| 4.19 | Overall length | l1 mm 5,316 |
| 4.20 | Length to face of forks | l2 mm 3,971 |
| 4.21 | Overall width | b1 mm 2,194 |
| 4.22 | Fork dimensions | s/e/l mm 70 x 180 x 1200 |
| 4.23 | Fork carriage ISO 2328, class / type A,B | Class IV |
| 4.24 | Fork-carriage width | b2 mm 2,268 |
| 4.31 | Ground clearance under mast, loaded | m1 mm 250 |
| 4.32 | Ground clearance center of wheelbase | m2 mm 302 |
| 4.33 | Aisle width for pallets 1,000 x 1,200 crossways (L x W) | Ast mm 5,590 |
| 4.34 | Aisle width for pallets 800 x 1,200 lengthways (W x L) | Ast mm 5,790 |
| 4.35 | Turning radius | Wa mm 3,700 |
| 4.36 | Smallest pivot point distance | b13 mm 1,354 |
| Performance Data | | |
| 5.1 | Travel speed, unloaded | km/h 35 |
| 5.2 | Lift speed, loaded / unloaded | mm/s 410 / 480 |
| 5.3 | Lowering speed, loaded / unloaded | mm/s 500 / 500 |
| 5.5 | Max drawbar pull, loaded | N 70,010 |
| 5.7 | Gradeability, loaded | % 35.2 |
| 5.10 | Service brake | FOOT(Hydraulic) |
| Engine | | |
| 6.1 | Engine manufacturer / type | CUMMINS / QSF3.8 |
| 6.2 | Engine power acc. To ISO 1585 | kW/rpm 75KW(102ps)/2200 |
| 6.3 | Maximum torque | kgf-m/rpm 42.3/1600 |
| 6.4 | No. of cylinder / displacement | / cc 4/3800 |
| 6.5 | Fuel consumption acc. To VDI cycle | l/h 8.5 |
| Other Details | | |
| 8.1 | Type of drive control | Full Auto |
| 8.2 | Operating pressure (system / attach) | kg/cm ² 210 / 150 |
| 8.3 | Oil volume (hydraulic) | l 115 |
| 8.4 | Sound level (at driver's ear according to DIN 12 053) | dB(A) 78.6 |
| 8.5 | Trailer coupling, type DIN | Pin |

* Standard and optional equipment may vary per country. Contact your Hyundai dealer for more information. The photos may include attachments and optional equipment that are not available in your area. Materials and specifications are subject to change without advance notice. All imperial measurements rounded off to the nearest pound or inch.

